

Building Steps for a 1/16th Scale Kenworth Polished Tanker



★ *Made in the U.S.A.* ★



This is the base painted red with black seats



Use a pop rivet or 4-40 tap and screw to install the dash



Add the dash assembly using pop rivets or 4-40 screws
Add the headlights with jell super glue
Put one side of the double sided tape to back of seats



If you are adding
a tool box cover
use the double
sided tape.
We use 3m VHB
double sided tape



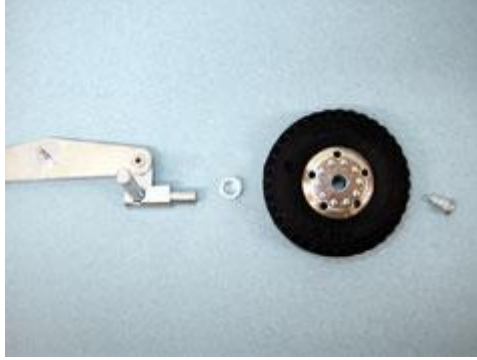
Mark and drill the 1/16 hole for mirrors



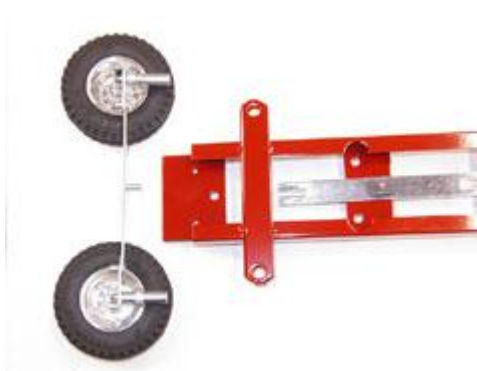
Attach the KENWORTH emblems



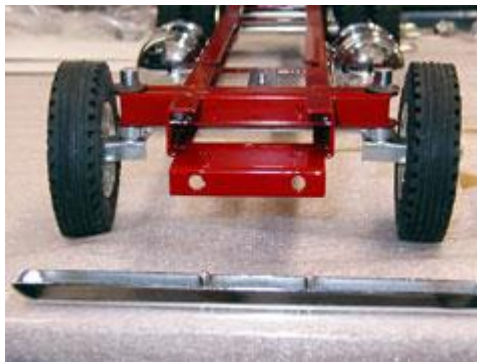
Tap in the radiator cap and glue in the running lights



Assemble the front axle assembly



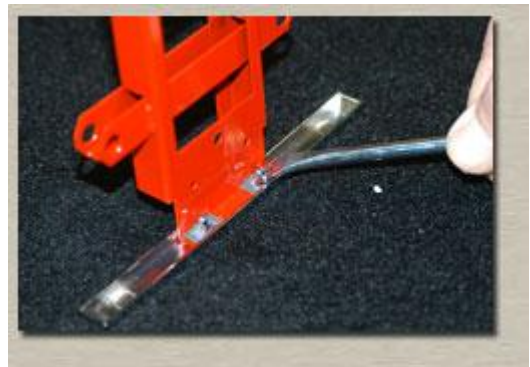
Put the small spacer on the spindle and set the frame on the front axle assembly. Press on the black retainers. Next add the steering arm and small black retainer



Here is a close up view of the assembled front axle assembly

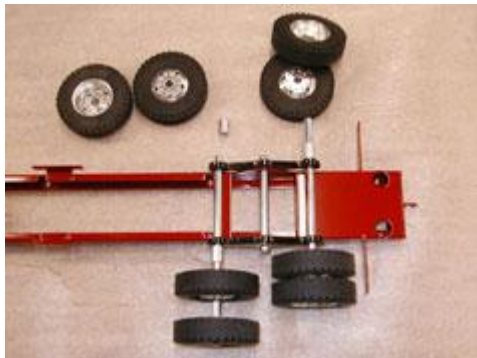


Mount the front bumper in the two holes in the frame, using the two retaining clips





Add the two walking beams and the chromed retainers. You can tap or squeeze the retainers onto 1/4 shaft



Assemble the duals on the axle for the rear axle assembly and insert the spacer. Then insert the axles into the walking beam. Use a 1/2 inch socket and carefully push the chromed retainers on the axles.



Screw the fuel tanks on to the mounting brackets on the frame



Mount the mud flaps on to the rear of the frame. Remove the tail lights from the adhesive backing and position them on to the rear of the frame.



Here is the completed frame



If you are using 1/4 fenders, you will need to drill in the frame and screw the 1/4 fenders in place



Place glue on the 3 mounting towers



Remove the tape cover on the rear of the seats and slide cab down into position. Press and wiggle the cab down into place



**Remove tape cover and press the radiator into place.
Hold firmly into place for 10 seconds**



Place the exhaust angle, mark & drill exhaust 5/64"



**Use the 3 self tapping screws to fasten cab assembly
to frame.
Use a small amount of lubricant on the threads**



Screw the cab on the frame



Slide the J-Hook up through the hole in the cab roof and into the slot in the steering mechanism



Mount the air horn on the top of the J-Hook shaft and tap in the horn set screw, or use a epoxy like J-B Weld.



**Here is a assembled unfinished tractor with fifth wheel kit that sells for \$350
The optional sleeper is made from machined solid aluminum \$65**



The sleeper is attached to the frame with four screws



Rear view of the completed cab mounted on the frame



Front view of the completed cab mounted on the frame



Mount the tank on the truck frame with these screws



Tank mounted on the Kenworth frame